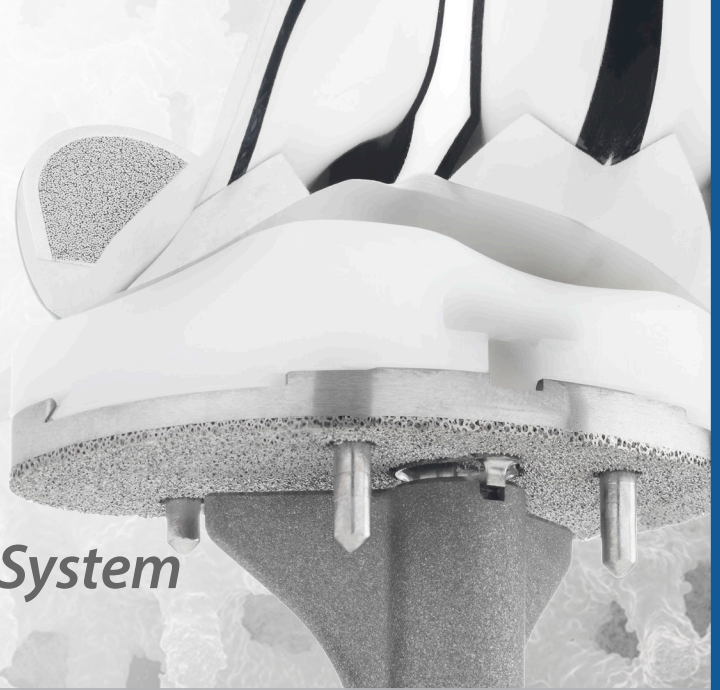


eMP™

Evolution® BioFoam® Tibial System For Cementless Tibial Fixation



BioFoam® Cancellous Titanium represents a new generation in cementless fixation. It is a biocompatible implant that is designed to provide tremendous early fixation without compromising the long-term demands that are required in today's increasingly young and more active patients.¹



Fixation with Bite™

The structure of BioFoam® Cancellous Titanium acts as a biological scaffold designed to allow fast, fluid bone ingrowth.²

True Trabecular Architecture

- ▶ 60-70% Porous
- ▶ Full Interconnecting Porosity
- ▶ Manufactured from Commercially Pure (CP) Titanium Metal
- ▶ Osteoconductive Matrix

High Compressive Strength^{3,4}

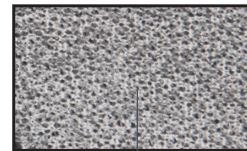
- ▶ Remains strong under repeated impaction and loading

High Abrasion Resistance⁵

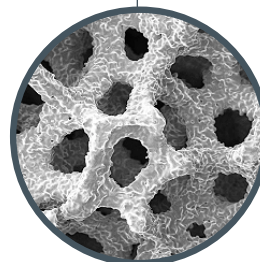
- ▶ Ability to withstand surgical impaction and still maintain 70% porous stratum to allow complete osseous integration.

Increased Stability at Initial Implantation⁶

- ▶ Coarse Struts "Bite" into bone
- ▶ Provides initial Scratch-fit



100X Magnification



200X Magnification

Evolution® BioFoam® Tibial System

For Cementless Tibial Fixation

Ordering Information

Evolution® BioFoam® Tibial Base Plate With Screwholes

Catalog No.	Description	Size
ETPSB2PL	Evolution® MP Tib Screw BF	Size 2+ Left
ETPSB3SL	Evolution® MP Tib Screw BF	Size 3 Standard Left
ETPSB4SL	Evolution® MP Tib Screw BF	Size 4 Standard Left
ETPSB5SL	Evolution® MP Tib Screw BF	Size 5 Standard Left
ETPSB6SL	Evolution® MP Tib Screw BF	Size 6 Standard Left
ETPSB6PL	Evolution® MP Tib Screw BF	Size 6+ Left
ETPSB7SL	Evolution® MP Tib Screw BF	Size 7 Standard Left
ETPSB8SL	Evolution® MP Tib Screw BF	Size 8 Standard Left
ETPSB2PR	Evolution® MP Tib Screw BF	Size 2+ Right
ETPSB3SR	Evolution® MP Tib Screw BF	Size 3 Standard Right
ETPSB4SR	Evolution® MP Tib Screw BF	Size 4 Standard Right
ETPSB5SR	Evolution® MP Tib Screw BF	Size 5 Standard Right
ETPSB6SR	Evolution® MP Tib Screw BF	Size 6 Standard Right
ETPSB6PR	Evolution® MP Tib Screw BF	Size 6+ Right
ETPSB7SR	Evolution® MP Tib Screw BF	Size 7 Standard Right
ETPSB8SR	Evolution® MP Tib Screw BF	Size 8 Standard Right

Evolution® BioFoam® Tibial Base Plate Without Screwholes

Catalog No.	Description	Size
ETPLB2PL	Evolution® MP Tib Screwless BF	Size 2+ Left
ETPLB3SL	Evolution® MP Tib Screwless BF	Size 3 Standard Left
ETPLB4SL	Evolution® MP Tib Screwless BF	Size 4 Standard Left
ETPLB5SL	Evolution® MP Tib Screwless BF	Size 5 Standard Left
ETPLB6SL	Evolution® MP Tib Screwless BF	Size 6 Standard Left
ETPLB6PL	Evolution® MP Tib Screwless BF	Size 6+ Left
ETPLB7SL	Evolution® MP Tib Screwless BF	Size 7 Standard Left
ETPLB8SL	Evolution® MP Tib Screwless BF	Size 8 Standard Left
ETPLB2PR	Evolution® MP Tib Screwless BF	Size 2+ Right
ETPLB3SR	Evolution® MP Tib Screwless BF	Size 3 Standard Right
ETPLB4SR	Evolution® MP Tib Screwless BF	Size 4 Standard Right
ETPLB5SR	Evolution® MP Tib Screwless BF	Size 5 Standard Right
ETPLB6SR	Evolution® MP Tib Screwless BF	Size 6 Standard Right
ETPLB6PR	Evolution® MP Tib Screwless BF	Size 6+ Right
ETPLB7SR	Evolution® MP Tib Screwless BF	Size 7 Standard Right
ETPLB8SR	Evolution® MP Tib Screwless BF	Size 8 Standard Right

Press-Fit Keels

Catalog No.	Description	Size
ETPK1534	Evolution® BioFoam® Pressfit Keel - Primary 15mm	15mm x Size 2+/3/4
ETPSB4SL	Evolution® BioFoam® Pressfit Keel - Primary 15mm	15mm x Size 5/6
ETPSB5SL	Evolution® BioFoam® Pressfit Keel - Primary 15mm	15mm x Size 6+/7/8/8+

Compatibility Chart

Tibial Base	Modular Keels			
	ETPK1512	ETPK1534	ETPK1556	ETPK1578
2+	x	x		
3	x	x		
4	x	x		
5	x	x	x	
6	x	x	x	
6+	x	x	x	
7	x	x	x	x
8	x	x	x	x
8+	x	x	x	x

Evolution BioFoam Tibial System, Implant Kits

Catalog No.	Description
EBFRKITA	Evolution® Biofoam® With Screw, Right
EBFLKITA	Evolution® Biofoam® With Screw, Left
EBFRKITB	Evolution® Biofoam® Without Screw, Right
EBFLKITB	Evolution® Biofoam® Without Screw, Left
EKPFKITA	Evolution® Primary Keel Kit

The eMP™ Knee System addresses the limitations of traditional designs and today's patient needs by delivering superior flexion stability, anatomic motion, and wear-limiting design characteristics.

REFERENCES:

1. Global Data, 2013
2. Woodell-May, J.E., Kumar, M. In vitro comparison of cell proliferation on Ti6Al4V and Tantalum Metal. Poster No. 1578 presented at 53rd Annual Meeting of the Orthopaedic Research Society
3. Data on file at MicroPort Orthopedics, Engineering Report TS06-0098
4. J.D. Bobyn. JBJS [Br] 1999;81-B:907-14.
5. Dyson, E.D., Jackson, C.K. and Whitehouse, W. J., Scanning electron microscope studies of human trabecular bone, Nature, 225, 957-959, 1970.
6. Data on file at MicroPort Orthopedics, Engineering Report ER06-0046.



Full Function, Faster®



MicroPort Orthopedics Inc.
5677 Airline Road
Arlington, TN USA 38002
866 872 0211



MicroPort Orthopedics BV
Hoogoorddreef 5
1101 BA Amsterdam
The Netherlands
+31 20 545 01 00

ortho.microport.com

The CE-Marking of Conformity is applied per catalog number and appears on the outer package label, if applicable.

Trademarks and registered marks of MicroPort Orthopedics Inc.
© 2016 MicroPort Orthopedics Inc. All Rights Reserved. 011910